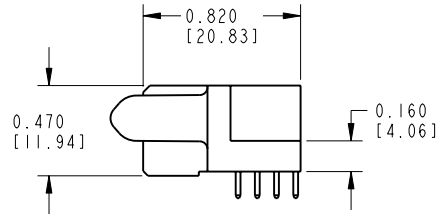
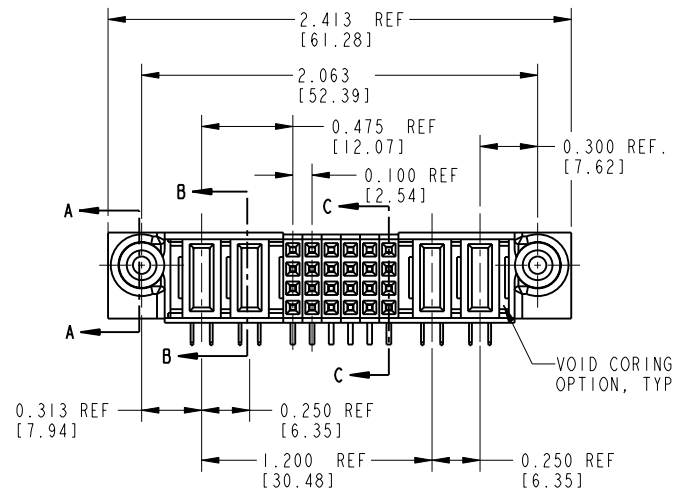
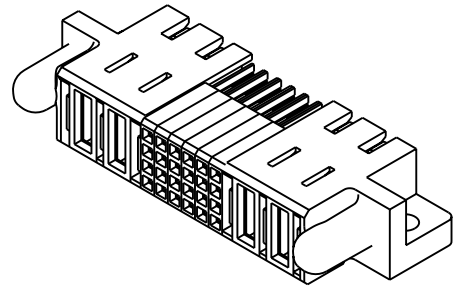
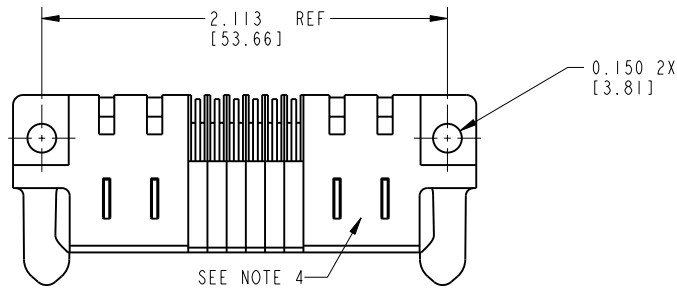


Tous droits strictement réservés. Reproduction ou communication o des liers interdite sous quelque forme que ce soit sans autorisation écrite du propriétaire. Propriete de c FCI. Droits de reproduction FCI.



All rights strictly reserved. Reproduction or issue to third parties in any form whomever is not permitted without written authority from the proprietor. Property of FCI. Copyright FCI.

PRODUCT NO. 51427-001-- NOTE 2	ROWS D C B A	POWER		SIGNAL					POWER		F2		
		F1	P4	P3	6	5	4	3	2	1		P2	P1
			PA	PA	H	H	H	H	H	H	PA	PA	
					G	G	G	G	G	G			
					F	F	F	F	F	F			
					E	E	E	E	E	E			



CONFIDENTIAL

mat'l code				SEE NOTES		tolerances unless otherwise specified		CUSTOMER COPY		FCI www.fciconnect.com	
ltr	ecn no.	dr	date	linear	.XX±.01/.X±.3		projection		title		
A	V91744	SAR	02-21-00		.XXX±.005/.X±.13				2P + 24S + 2P R/A RECEPTALE		
B	V01376	EKK	06-08-00	angles	.XXXX±.0020/.XXX±.051		INCH/MM		product family		
C	V01555	CHB	06-29-00		0°±2°		scale 1:1		PwrBlade		
D	V21786	TAB	11-18-02	dr	C. BAROT	01-18-99	product family		code		
E	DG05-0242	SJ	07/25/05	enrg	J. BROWN	02-18-00	size		213		
F	DG06-0187	JMG	05/27/06	chr	J. BROWN	01-18-99	dwg no		51427		
				appd	J. BROWN	02-21-00	A		sheet 1 of 4		
sheet index		revision sheet		F	F	F					
				1	2	3					

THIS FILE WAS ORIGINALLY CREATED IN THE PRO ENGINEER ENVIRONMENT AND ANY FUTURE REVISIONS TO THIS FILE MUST BE MADE IN THE PRO ENGINEER ENVIRONMENT

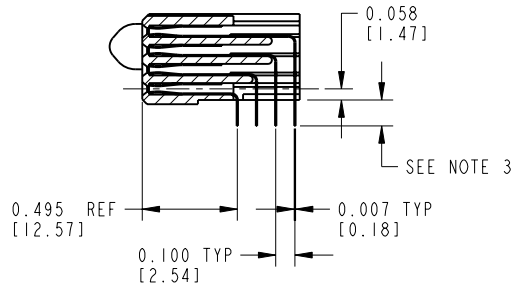
Tous droits strictement réservés. Reproduction ou communication o des liens interdite sous quelque forme que ce soit sans autorisation écrite du propriétaire. Propriete de c FCI. Droits de reproduction FCI.



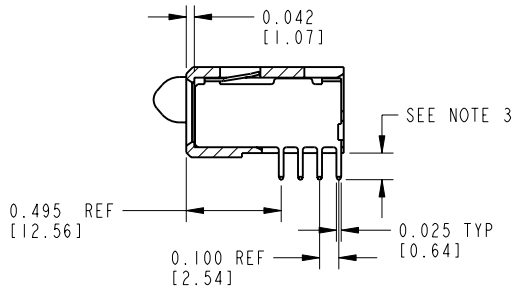
All rights strictly reserved. Reproduction or issue to third parties in any form, whatever is not permitted without written authority from the proprietor. Property of FCI. Copyright FCI.

PRODUCT NUMBER

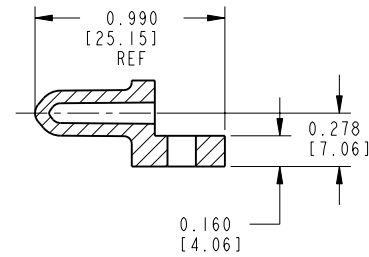
51427-001--
NOTE: (2)



SECTION C-C



SECTION B-B



SECTION A-A
SCALE 1:1

CONFIDENTIAL

mat'l code		SEE NOTES		tolerances unless otherwise specified		CUSTOMER		FCI	
lfr	ecr no.	dr	date	linear	.XX±.01/.X±.3	COPY		www.fciconnect.com	
F				angles	.XXX±.005/.X±.13	projection		title	
				dr	.XXXX±.0020/.XXX±.051	INCH/MM		2P + 24S + 2P R/A RECEPTALE	
				enr	0°±2°	scale		product family	
				chr	C. BAROT 01-18-99	1:1		PwrBlade	
				appd	J. BROWN 02-18-00			code	
					J. BROWN 01-18-99			213	
					J. BROWN 02-21-00			sheet	
sheet index	revision sheet							2 of 4	

cage code 22526

Pro/E

PDM: Rev:F

STATUS: Released

Printed: Feb 06, 2008

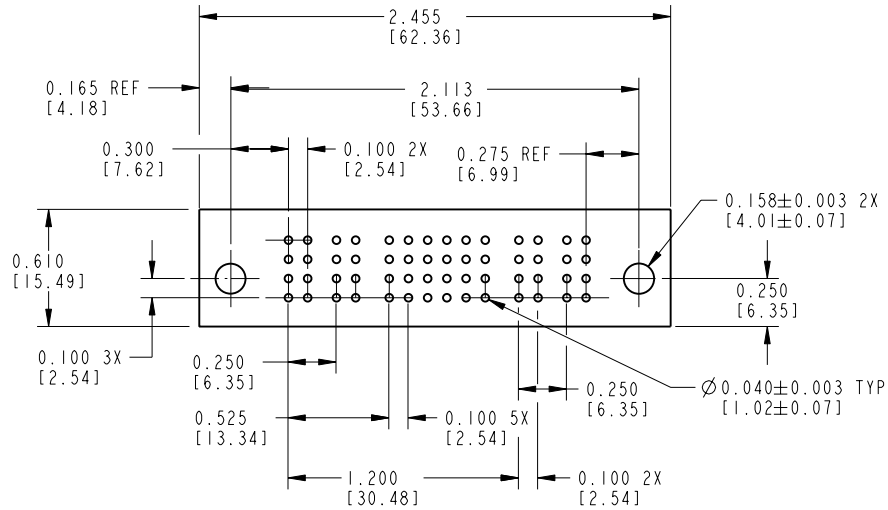
Tous droits strictement reserves. Reproduction ou communication o des liers interdite sous quelque forme que ce soit sans autorisation ecrite du proprietaire. Propriete de c FCI. Droits de reproduction FCI.



All rights strictly reserved. Reproduction or issue to third parties in any form whatever is not permitted without written authority from the proprietor. Property of FCI. Copyright FCI.

PRODUCT NUMBER

51427-001--
NOTE: (2)



RECOMMENDED PCB FOOTPRINT

SCALE 1:1

CONFIDENTIAL

mat'l code		SEE NOTES		tolerances unless otherwise specified		CUSTOMER		FCI	
lfr	ecn no.	dr	date	linear	.XX±.01/.X±.3	COPY		www.fciconnect.com	
F				angles	.XXX±.005/.X±.13	projection		title	
				dr	.XXXX±.0020/.XXX±.051	INCH/MM		2P + 24S + 2P	
				engr	0°±2°	scale		R/A RECEPTALE	
				chr	C. BAROT 01-18-99	1:1		product family	
				appd	J. BROWN 02-18-00			PwrBlade	
					J. BROWN 01-18-99			code	
					J. BROWN 02-21-00			213	
sheet index	revision sheet							size	
								dwg no	
								A 51427	
								sheet	
								3 of 4	

cage code 22526

Pro/E

PDM: Rev:F

STATUS: Released

Printed: Feb 06, 2008

Tous droits strictement reserves. Reproduction ou communication o des liers interdite sous quelque forme que ce soit sans autorisation ecrite du proprietaire. Propriete de c FCI. Droits de reproduction FCI.



All rights strictly reserved. Reproduction or issue to third parties in any form whatever is not permitted without written authority from the proprietor. Property of FCI. Copyright FCI.

1 | 2

3 |

4

PRODUCT NUMBER

51427-001--
NOTE: ②

CONNECTOR NOTES:

- HOUSING MATERIAL: GLASS FILLED HIGH TEMP THERMOPLASTIC, UL94V-0
SIGNAL CONTACT MATERIAL: COPPER ALLOY
POWER CONTACT MATERIAL: COPPER ALLOY
- 51427-001; 51427-001LF; 51427-001GLF PLATING SPEC. SEE PRINT: 10064183
- TAIL LENGTH
0.135 ± .020 [3.43 ± .25]
- MANUFACTURER NAME, P/N, AND DATE CODE TO APPEAR ON THIS SURFACE.

PCB NOTES:

- ALL DIMENSIONS ARE BASIC UNLESS OTHERWISE SPECIFIED
- ALL THROUGH HOLES ARE LOCATED WITH A TRUE POSITION OF 0.004"
- ALL DIAMETERS ARE FINISHED HOLE SIZES
- Ø 0.158" THROUGH HOLES ARE UNPLATED

A

A

CONFIDENTIAL

mat'l code		SEE NOTES		tolerances unless otherwise specified		CUSTOMER		FCI		www.fciconnect.com		
ltr	ecr no.	dr	date	linear	.XX ± .01 / .X ± .3		COPY		projection	title		
F					.XXX ± .005 / .X ± .13		INCH/MM			2P + 24S + 2P R/A RECEPTALE		
				angles	.XXX ± .0020 / .XXX ± .051		scale		product family	code		
				0° ± 2°		1:1		PwrBlade		213		
				dr	C. BAROT	01-18-99	A		size	dwg no	sheet	
				enr	J. BROWN	02-18-00	51427					4
				chr	J. BROWN	01-18-99						
				appd	J. BROWN	02-21-00						
sheet index	revision sheet											

B

B

1 | 2

Pro/E

3 |

cage code 22526

4